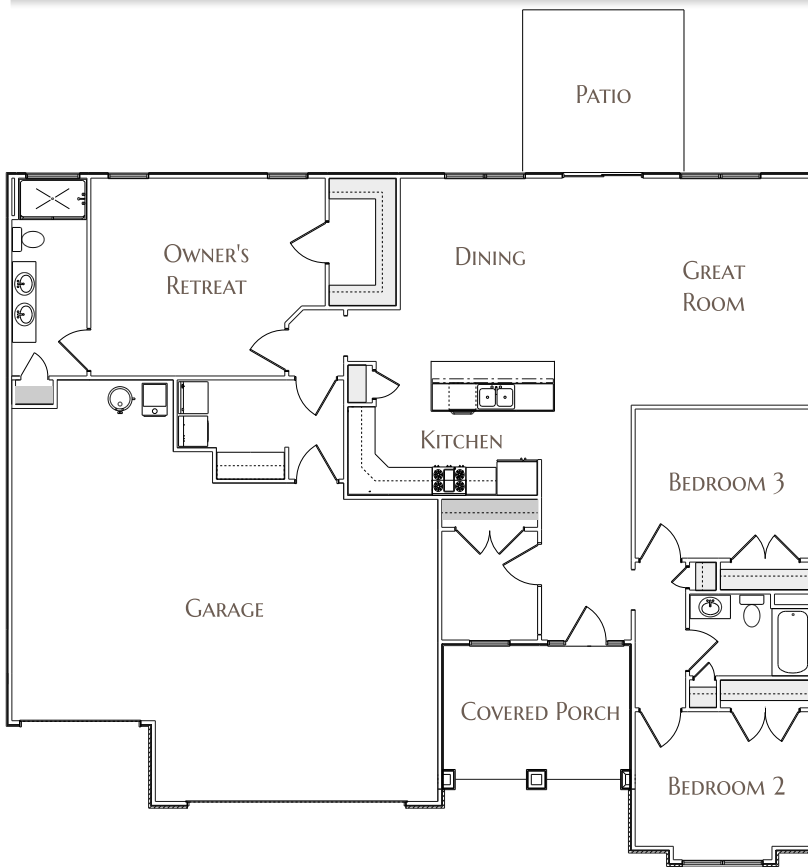




SOMO Kennesaw3N

HOMEPLAN

CONTEMPORARY RANCH WITH 1,840 SF OF FINISHED AREA



MAIN FLOOR

FEATURES

- Covered Porch and Back Patio
- Three Car Garage
- Vaulted Ceiling in Living Area
- 3 Bedrooms plus Mini Office, Mudroom, and 2 Spacious Full Baths
- Private Owners Retreat with Large Walk-In Closet
- Generous Closet Spaces and Storage
- Gourmet Kitchen and Pantry with Stainless Appliances
- Amish-Built Custom Cabinets all with Soft-Close Doors
- Granite, Quartz Countertops
- High Efficiency HVAC, Well Insulated

SOMO IS CONVENIENTLY LOCATED ON BLOOMINGTON'S DYNAMIC SOUTHWEST SIDE, JUST 4 MILES FROM DOWNTOWN AND INDIANA UNIVERSITY. PROUDLY OFFERED BY WININGER CONSTRUCTION, A FAMILY-OWNED COMPANY WITH OVER 80 YEARS OF EXPERIENCE DEVELOPING AND CONNECTING SUCCESSFUL COMMUNITIES IN SOUTHERN AND CENTRAL INDIANA.