



# SOMO Kennesaw2S

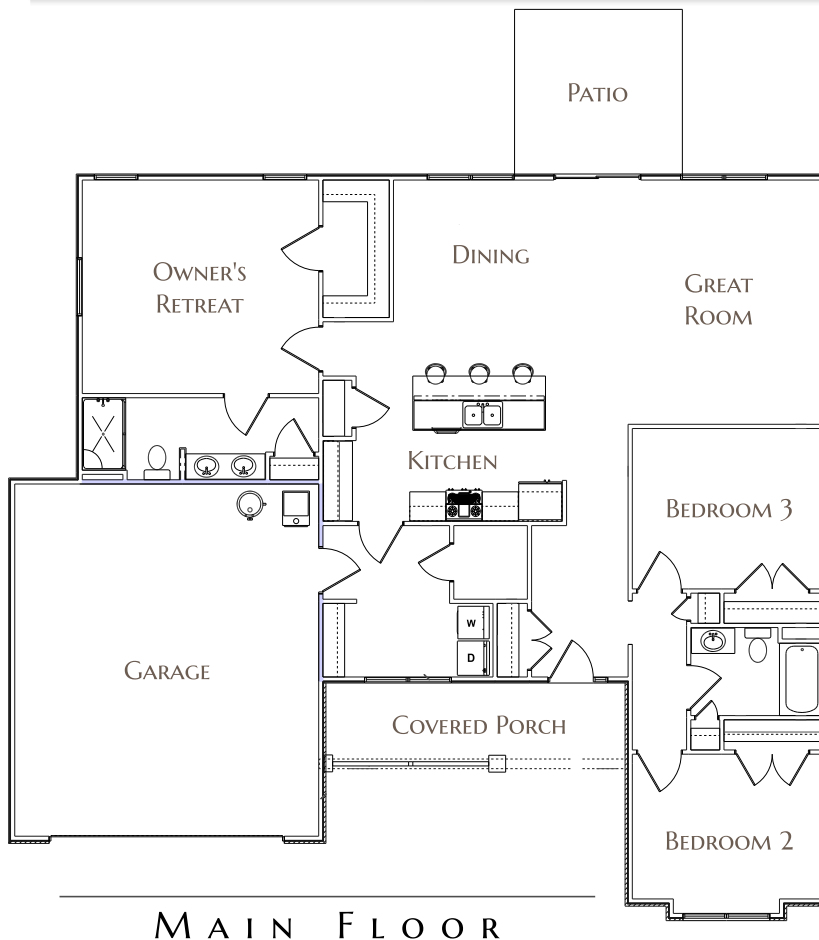
## HOMEPLAN

CONTEMPORARY RANCH WITH 1,779 SF OF FINISHED AREA



### FEATURES

- Covered Front Porch
- Exterior Stone Accents
- 14' Vaulted Ceiling in Living Area
- 3 Bedrooms plus Pantry/Storage, Mudroom, and 2 Full Baths
- Private Owners Retreat with Large Walk-In Closet
- Generous Closet Spaces and Storage
- Gourmet Kitchen and Pantry with Stainless Appliances
- Amish-Built Custom Cabinets all with Soft-Close Doors
- Granite, Quartz Countertops
- High Efficiency HVAC, Well Insulated



SOMO IS CONVENIENTLY LOCATED ON BLOOMINGTON'S DYNAMIC SOUTHWEST SIDE, JUST 4 MILES FROM DOWNTOWN AND INDIANA UNIVERSITY. PROUDLY OFFERED BY WININGER CONSTRUCTION, A FAMILY-OWNED COMPANY WITH OVER 80 YEARS OF EXPERIENCE DEVELOPING AND CONNECTING SUCCESSFUL COMMUNITIES IN SOUTHERN AND CENTRAL INDIANA.